

Published Manual Number/ECN: h9a060b37r#99457a

- Publishing System:
- Access Date:
- Document ECN's: Latest Available



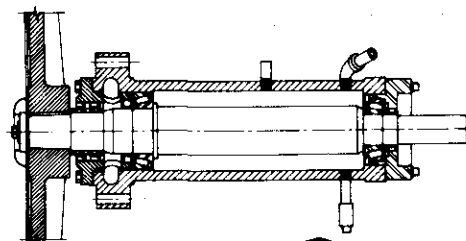
Kit Instruction - 39A060B37R 39A060B62R 39A060B71R



**Read the
separate
safety
manual
before
installing,
operating,
or servicing**

Maintenance Bulletin

PELLERIN MILNOR CORPORATION
P.O. Box 400, Kenner, LA 70063 (a suburb of New Orleans)
Service/Parts FAX: 504/469-9777



Sold and serviced by leading independent dealers the world over.



DISTRIBUTION: 01234567-6-X234XX7X90X

MAINTENANCE BULLETIN B22MB76002
January 2, 1976

SUBJECT: NEW IMPROVED CHART DRIVE TIMER MOTORS

Gentlemen:

We have just recently begun using a new, improved chart drive motor, which we have thoroughly tested under severe operating conditions and found superior to motors used previously. This new motor has heavier gears and we feel it should prove more durable in operation.

For replacing the old chart drive motor with the new chart drive motor, we furnish the new motor in a kit with the necessary additional parts and instructions. Please refer to the attached page BMP760023 and the reverse side BMP760023R. The drawings and simple instructions show how easy it is to install the new motor in place of the old one. You will notice that each side of the page contains different drawings and instructions dealing with the two possibilities of previously mounted chart drive motors in production. These motors are used on all 88-minute calibrated charts and are available in both 50 and 60 cycles.

Listed below are the old chart drive motors and the new replacement kit numbers (if you order by the old number, you will automatically receive the kit with the new motor in it):

	<u>Old Part No.</u>	<u>New Part No.</u>
For 208-240V/60C	39A060	39A060B71R
For 220V/50C	39A060A	39A060B62R

In addition to improved quality, this new chart drive motor has another good feature; it costs less...and we are passing this savings on to you!

We can assure you that we at MILNOR will continue working to improve our products as well as reduce costs wherever possible.

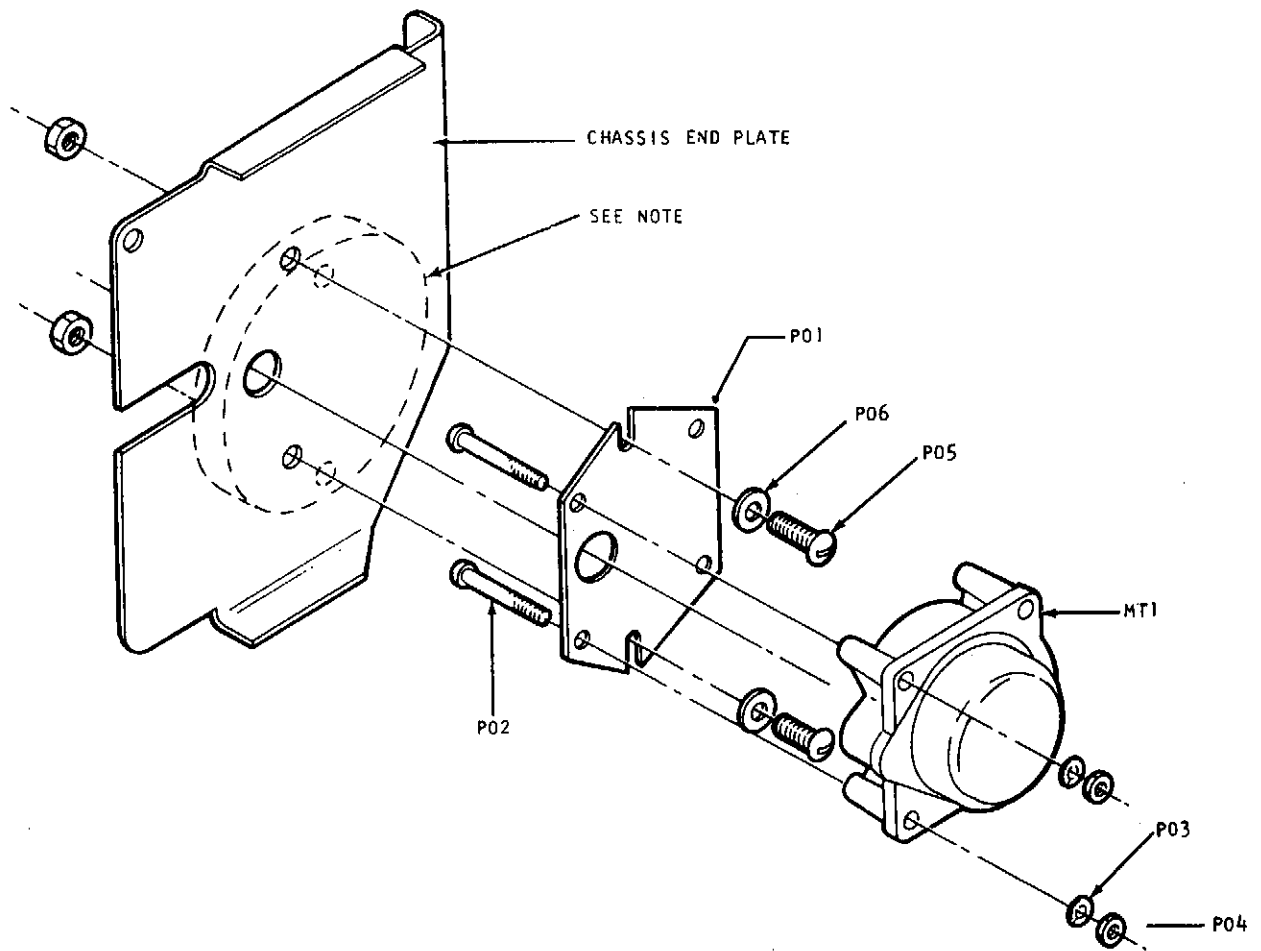
Very truly yours,

PELLERIN MILNOR CORPORATION

Bernard Berot
Bernard Berot
Service Manager

BB/cd

Attachement: BMP760023 and BMP760023R

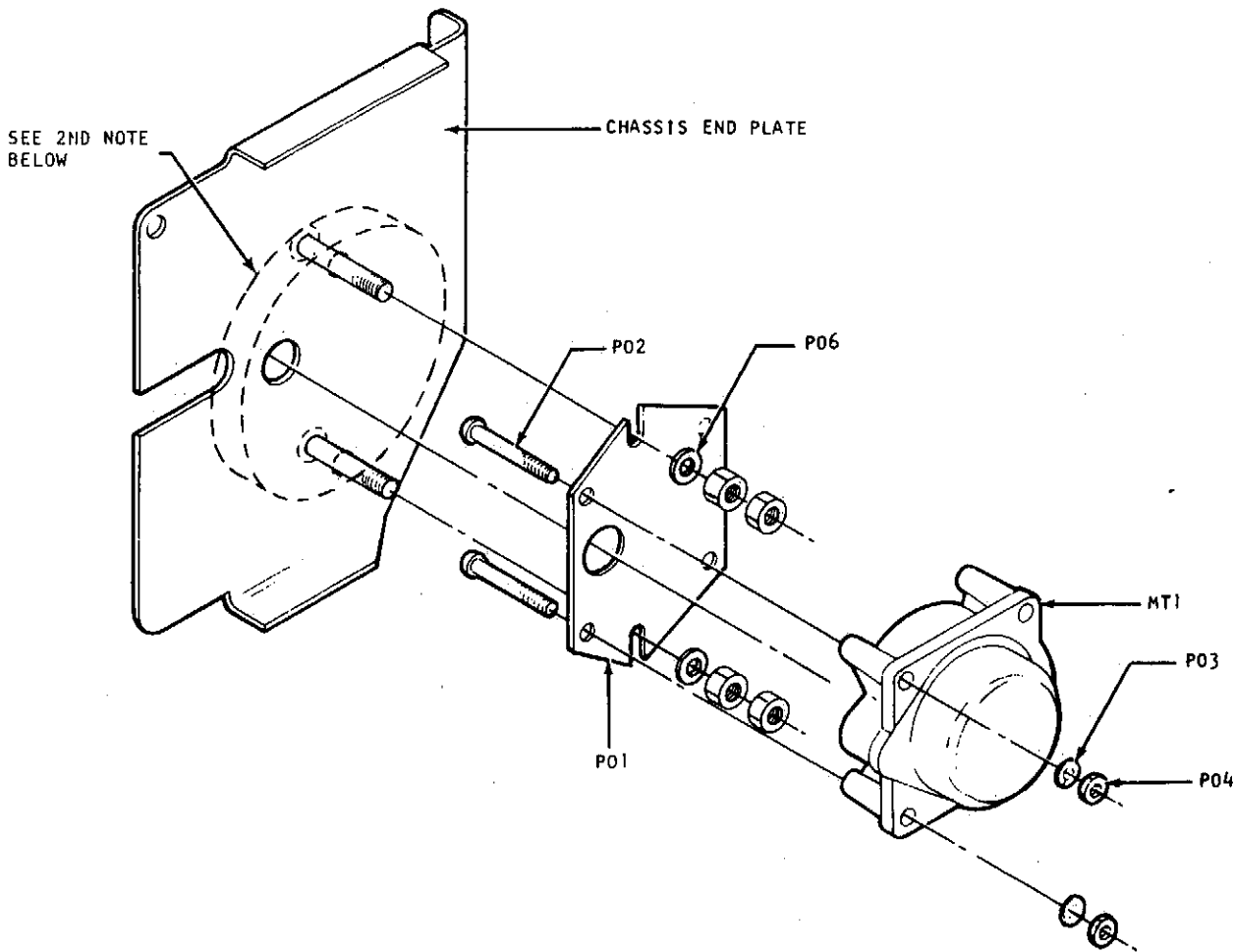


1. Disconnect chart drive motor leads and remove attaching hardware (two nuts to be reinstalled later).
2. Attach bracket (P01) onto new motor (MT1) using four screws (P02) lockwashers (P03) and nuts (P04).
3. Mount assembly to chassis end plate using screws (P05) flatwashers (P06) and two nuts previously removed (Step 1). Connect chart drive motor leads.

NOTE: When replacing the old style chart drive motor, the round gear case from the old unit must be completely removed before the new one can be installed.

PARAGON CHART DRIVE MOTOR INSTALLATION

PELLERIN MILNOR CORP.



1. Disconnect chart drive motor leads and remove four nuts. NOTE: Mounting screws are permanently installed. Do not attempt to remove mounting screws.
2. Attach bracket (P01) onto new motor (MT1) using four screws (P02), lockwashers (P03) and nuts (P04)
3. Slide assembly onto chassis end plate mounting screws, install flatwashers (P06), and start both nuts on each screw and hand tighten (see note below).
4. Use open end wrench for final tightening on bottom nuts first. Then tighten top nuts into locking position. Connect chart drive motor leads.

NOTE: You cannot slide assembly all the way onto chassis mounting screws prior to installing flatwashers and nuts. The motor housing prevents them from going onto screws. The nuts and flatwashers must be started while assembly is sufficiently loose on the mounting screws.

NOTE: When replacing the old style chart drive motor, the round gear case from the old unit must be completely removed before the new one can be installed.

PARAGON CHART DRIVE MOTOR INSTALLATION

PELLERIN MILNOR CORP.

INSTRUCTIONS FOR KIT 39A060B37A

The chart timer motor, MILNOR p/n 39A060B37 (120V 96 MPR chart motor), is no longer available from our vendor.

In order to accommodate existing chart controllers, we now offer the chart timer, p/n 39A060B71 (240 volt motor) along with a 120-240 volt 50 VA transformer to supply 240 volts to the motor. The new motors are only available in 240 volt AC. The transformer will output 240 volts AC to the new chart timer motor.

See the connection diagram below for the proper wiring of the transformer.

In order to supply spares for this application, we will supply a 240 volt 96 MPR chart motor, p/n 39A060B71, and a transformer to provide 240 from the 120 V power to the pre-existing motor. The primary of the transformer will be wired in place of the pre-existing motor and the new motor wired to the secondary of the transformer.

